

2023-2024 Screening Report

In the 23-24 screening year, TeenHope screened a total of 1,861 students. 32.6% of students identified as at-risk for signs and symptoms of depression, anxiety, and/or self-harm/ suicidal ideation. The TeenHope screening collects self-reported information including student's demographics and screening results. The following section provides a breakdown of information collected and analyzed in the recent screening year.

Screening Totals

Overall Student Screening Outcomes

Screening outcomes for anxiety, depression, and suicide ideation



A total of 1861 students were screened.

Not at-risk: 1255 (67.4%) students

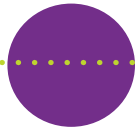
At-risk: 606 (32.6%) students

Self-harm or suicidal thoughts: 143 (23.6%) out of the 606 at-risk students, 7.7% of the total students screened, reported self-harm or suicidal thoughts within the past 2-weeks.

Screening outcomes for anxiety, depression, and suicide ideation

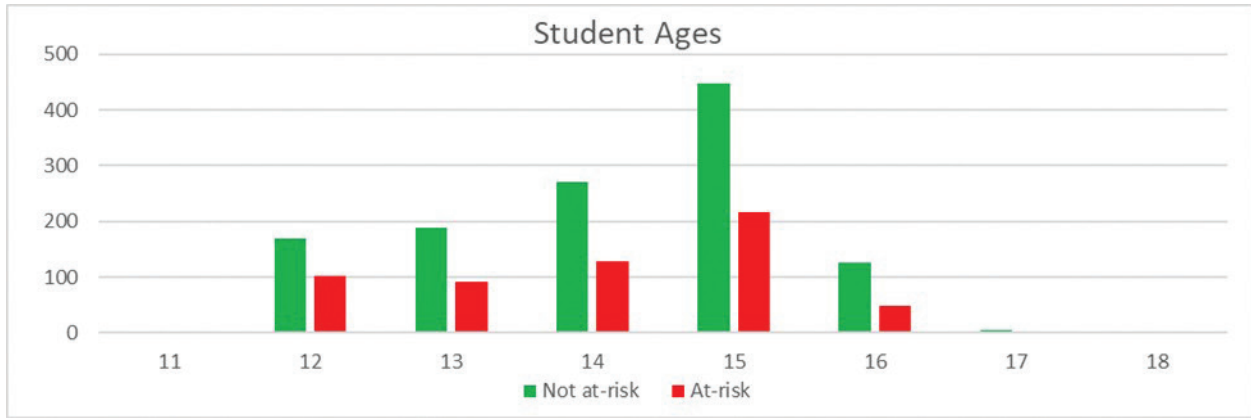


Demographics



The following demographics were self-reported by students, age, gender identity, grade, race and ethnicity.

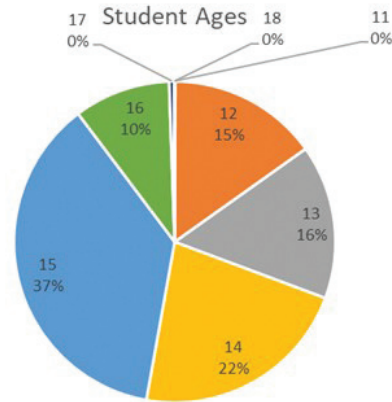
Outcomes by Age



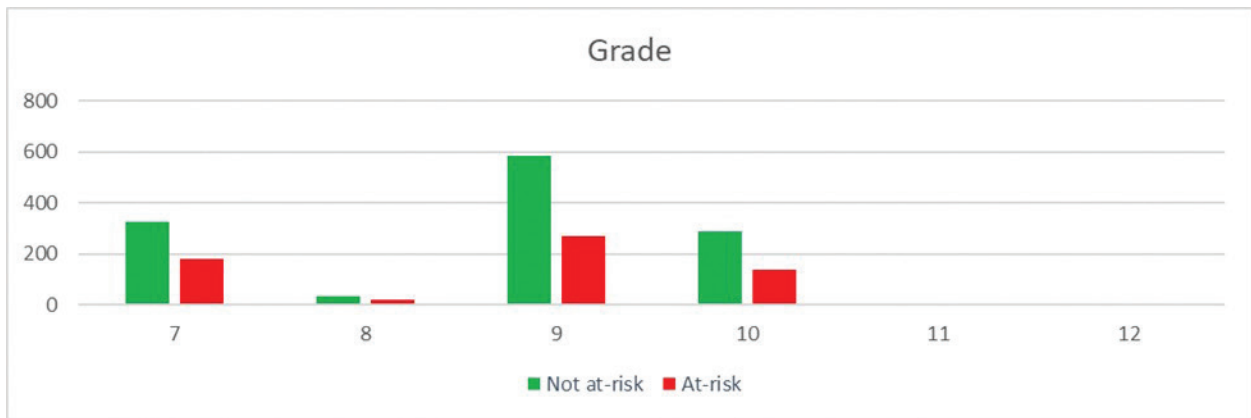
Age Breakdown:

- 11: 0 (0%) **not at-risk**; 1 (.1%) **at-risk**
- 12: 169 (9.4%) **not at-risk**; 103 (5.7%) **at-risk**
- 13: 189 (10.5%) **not at-risk**; 91 (5%) **at-risk**
- 14: 271 (15%) **not at-risk**; 128 (7.1%) **at-risk**
- 15: 448 (24.9%) **not at-risk**; 217 (12%) **at-risk**
- 16: 126 (7%) **not at-risk**; 49 (2.7%) **at-risk**
- 17: 6 (.3%) **not at-risk**; 3 (.2%) **at-risk**
- 18: 1 (.1%) **not at-risk**; 0 (0%) **at-risk**

n = 1802



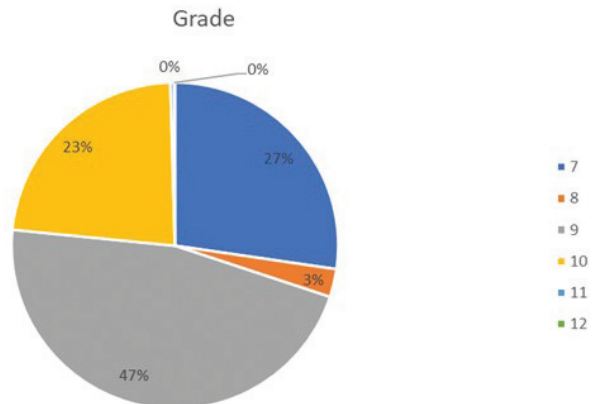
Outcomes by Grade



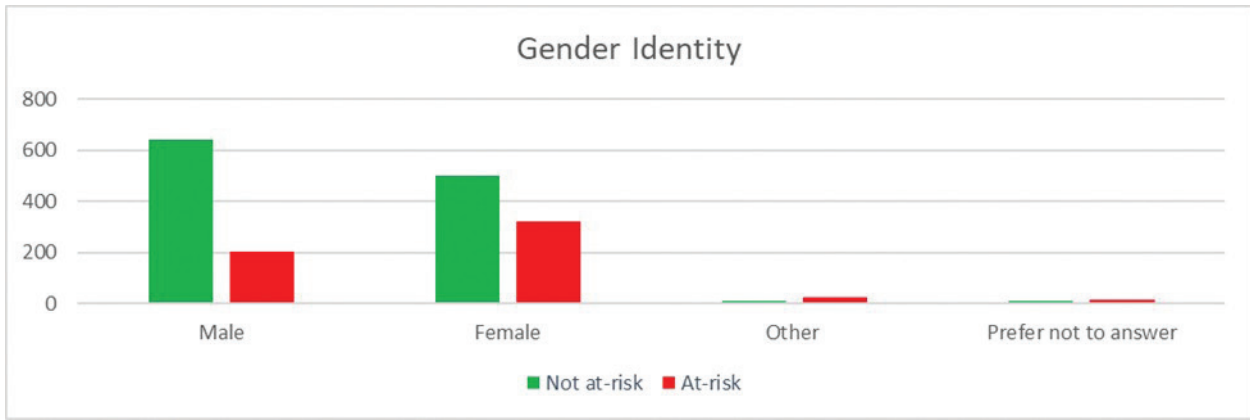
Grade Breakdown:

- 7: 324 (17.7%) **not at-risk**; 177 (9.6%) **at-risk**
- 8: 34 (1.9%) **not at-risk**; 17 (1%) **at-risk**
- 9: 586 (31.9%) **not at-risk**; 267 (14.6%) **at-risk**
- 10: 286 (15.6%) **not at-risk**; 136 (7.4%) **at-risk**
- 11: 6 (.3%) **not at-risk**; 1 (.1%) **at-risk**
- 12: 1 (.1%) **not at-risk**; 0 (0%) **at-risk**

n = 1835



Outcomes by Gender Identity



Gender Identity Breakdown:

Male:

640 (37.2%) **not at-risk**

202 (11.8%) **at-risk**

Female:

498 (29%) **not at-risk**

319 (18.6%) **at-risk**

Other:

12 (.7%) **not at-risk**

23 (1.3%) **at-risk**

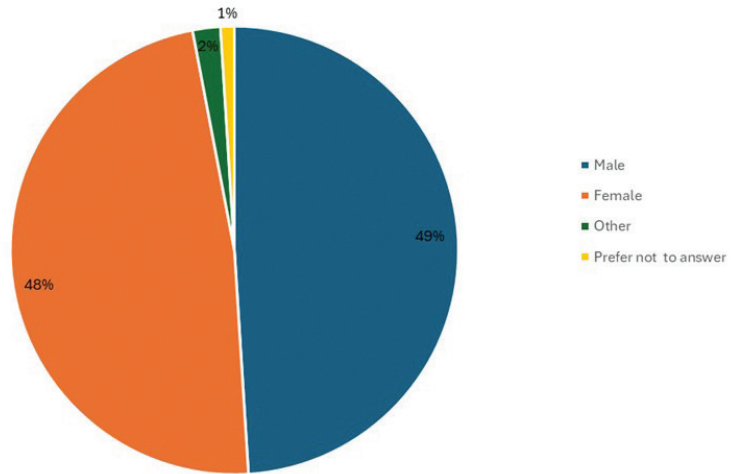
Prefer not to answer:

11 (.6%) **not at-risk**

8 (.8%) **at-risk**

n = 1719

Gender



Outcomes by Race and Ethnicity



Racial Identity Breakdown:

American Indian: 25 (1.4%) **not at-risk**; 22 (1.2%) **at-risk**

Asian: 55 (3.1%) **not at-risk**; 20 (1.1%) **at-risk**

Black (but not Latino): 38 (2.1%) **not at-risk**; 20 (1.1%) **at-risk**

Black and Latino: 42 (2.3%) **not at-risk**; 26 (1.5%) **at-risk**

White (but not Latino): 618 (34.5%) **not at-risk**; 276 (15.4%) **at-risk**

White and Latino: 293 (16.4%) **not at-risk**; 139 (7.8%) **at-risk**

Other: 88 (4.9%) **not at-risk**; 51 (2.9%) **at-risk**

Prefer not to answer: 45 (2.7%) **not at-risk**; 31 (1.7%) **at-risk**

n = 1789

Thank you!

A special thank you goes out to the following people for their hard work and hours of commitment entering data and completing the analysis review for the 23-24 screening year:

Samaritan Interns

1. Erika Snitzer
2. Lizzie Grosh
3. Josh Tonkay
4. Danielle Figura

Samaritan TeenHope Management Members

1. Ben Faro
2. Jimmy Elsner
3. Becky Felegy
4. Steve Schedler
5. Valerie Minnich